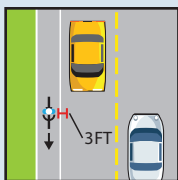


How *Cyclists* Share the Road Between Intersections

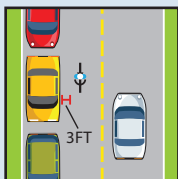
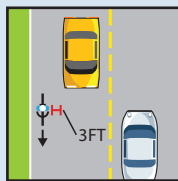


Photo by: Jim Lyle, TTI



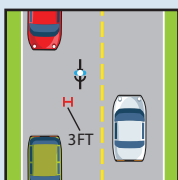
Share the Road: Maintain a Safe Distance

- Ride in the **same direction as traffic** and **as far to the right as practicable**. Use **bike lanes** or roadway shoulders whenever possible.
- Even without a marked bike lane, **cyclists and motorists can travel side-by-side** if there is enough room to allow **three feet of distance** between the two vehicles.
- **If there isn't enough room**, check over your shoulder, signal, and **move into the center of the lane**.



Share the Road: Navigating On-Street Parking

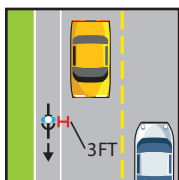
- Ride at least **three feet away from parked vehicles** to avoid an opening car door. This may require you to take the lane.
- **Ride in a straight line** past the whole line of parked vehicles, rather than weaving in and out around them.
- Be alert for vehicles pulling in or out of parking spaces. **Watch your speed**, and **be ready to stop** if necessary.



How *Motorists* Share the Road Between Intersections

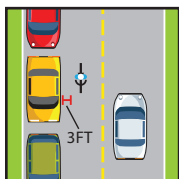
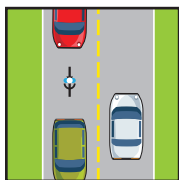


Photo by: Jim Lyle, TTI



Share the Road: Maintain a Safe Distance

- **Bicycles** are considered to be **vehicles** under traffic laws in Texas.
- Please allow at least **three feet of distance** between your vehicle and a cyclist.
- Motorists driving **trucks or commercial vehicles** should **allow six feet** between their vehicle and a cyclist.
- Even without a marked bike lane, **cyclists and motorists can travel side-by-side** if there is enough room to **allow a safe distance** between the two vehicles.
- If there is not enough room, the **cyclist may move into the center of the lane**.



Share the Road: Navigating On-Street Parking

- **Watch for cyclists** who are riding close to parked vehicles. If a car door opens unexpectedly, the **cyclist may have to swerve** to avoid it.
- If you're exiting a car, **do a safety check** by using your mirrors and looking over your shoulder for cars and bicycles **before opening your door**.
- Do the same **safety check** when you're getting ready to **pull out of a parking space**.
- Please **do not park in a marked bike lane**. Blocking bike lanes creates a hazard for cyclists as well as other vehicles.

